

Launching - VL170A tread

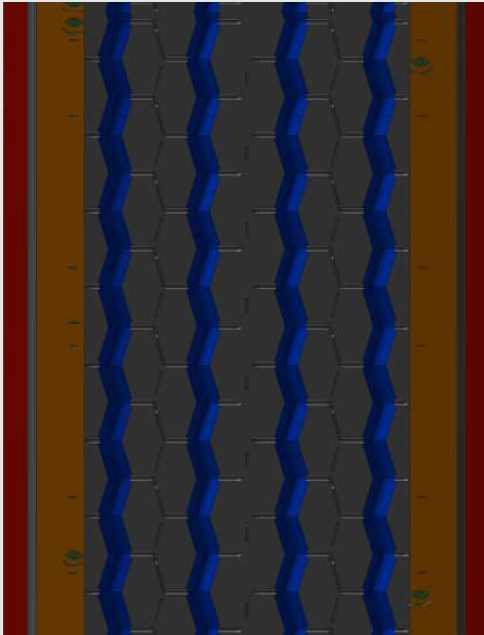
The new tread VL170A was developed for super single tyres on trailer and semitrailer axel vehicles. Indicated for highway segment, it can also be used in regional segment and snow terrains. The M+S marking and 3PMSF certification, also known as the Alpine Symbol, guarantees VL170A great performance under severe snow conditions.

Check out the main features of the new design:



VL170A means:

V	Vipal tread
L	Indicated to use in trailer axles
170	Hundreds 100 and 200 represent treads for radial tyres use in highways and paved streets
A	Tread with wings



- Exclusive wings to provide a better finishing in the sidewall of the tyre and minimize the side dragging effect originated from maneuvering near the curb.
- Rounded shoulders that helps to reduce the side dragging effects, avoiding chunking and the tread to come off.
- Zig-zag grooves that together with its bold pattern design contributes to get the 3PMSF certificate.
- Eye Control for the user to easily identify anomalies in the tyre, suggested time to rotate the tyres and when to remove the tyre to retread it.

Recommended application



Highway

Optional application



Snow

Construction



Radial



Mud and Snow



Super Single



Alpine Symbol

Axles






Trailer

Vehicles



Trailer and Semi-trailer

Technical information:

Code	Description	N#					
			mm	in	mm	in	Recommended tyre
507246	VL170A P	12	295	11 5/8	14,00	18/32	385
507209	VL170A M	12	295	11 5/8	14,00	18/32	385

The VL170A is available in all countries, except Brazil.