

VL105 tread launching

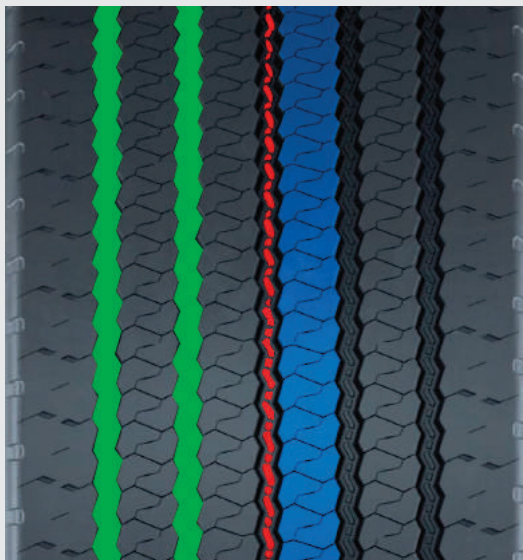
Check out Vipal's new snow tread. **VL105's** compound has excellent adhesion to the ground and mileage performance, even at extremely low temperatures. Its design with sipes provides greater traction and self-cleaning, as well as five grooves that increase stability. The tread has M+S and 3PMSF (Alpine Symbol) markings that guarantee its high performance in mud and snow conditions.


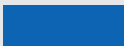



VL105 means:

V	Vipal tread
L	Indicated to use in trailer axles
105	Hundreds 100 and 200 represent treads for radial tyres use in highways and paved streets

See the main advantages of the new design:



-  Circumferential grooves that provide greater stability.
-  Sipes that provide excellent grip in snow conditions and regular wear.
-  Grooves with ejectors that prevent the retention of stones and other objects.

Recommended application



Highway



Snow

Optional application



Regional

Construction



Radial



Mud and Snow



Alpine Symbol

Axles




Trailer

Vehicles



Trailer and Semi-trailer

Technical information:

Code	Description	N#							 Recommended tyre
			mm	in	kg / m	lb / ft	mm	in	
507207	VL 105 (M)	12.0	300	11 3/4	4,90	3.29	14,0	18/32	385
507208	VL 105 (S)	12.5	325	12 3/4	5,29	3.56	14,0	18/32	385 425

The product is available for sale in all countries except Brazil.